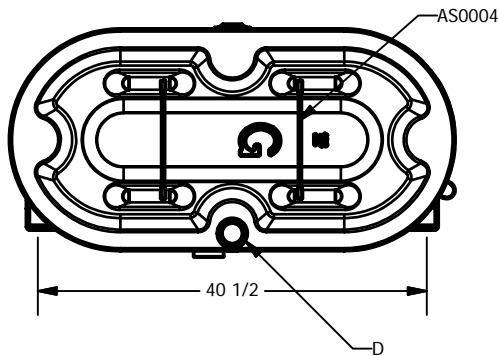


Table Describing digits 1 to 5 of Product #				
Product #	CAPACITY	NOM STEEL THK.	A (in)	B (in)
10650_	455L (100 IMP. GAL.)	2.3 mm (12 gauge)	12	30
10850_	680L (150 IMP. GAL.)	2.3 mm (12 gauge)	16	45
10950_	910L (200 IMP. GAL.)	2.3 mm (12 gauge)	16	60
11050_	1111L (250 IMP. GAL.)	2.3 mm (12 gauge)	16	72

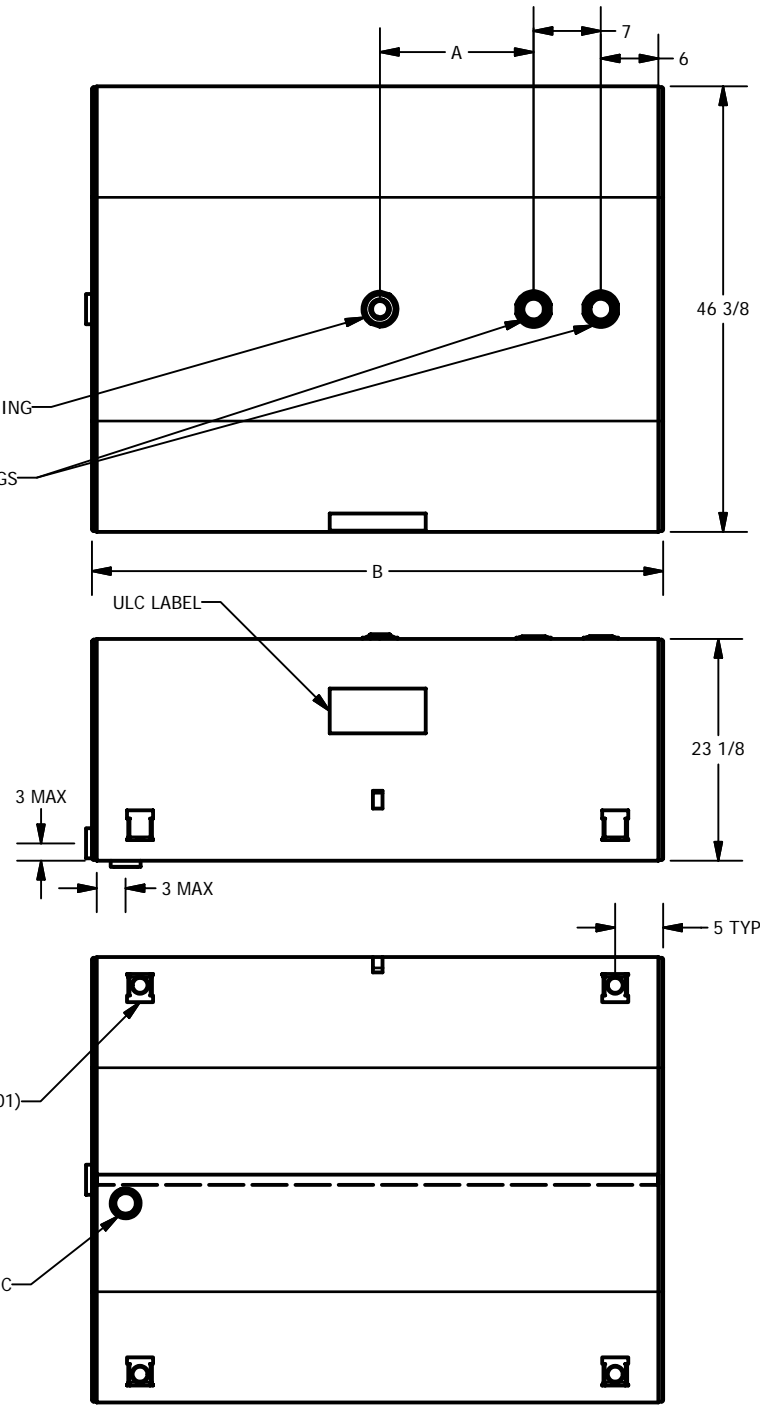
Table Describing Digits 6 of Product#		
Product#	C (in)	D (in)
_____0		1/2" NPT
_____1	1/2" NPT	
_____2		2" NPT
_____3	2" NPT	

B

A



1/4 LEG SUPPORT (AS0001)



THE LETTERS "G" OR "L" CAN BE FOUND ON THE TANK HEADS, DEPENDING ON THE MODEL

This drawing is the exclusive property of Granby Industries Limited Partnership.  
No part of this drawing may be used or reproduced in any manner without written permission from Granby Industries Limited Partnership

<p><b>LINEAR STD TOLERANCES</b> 0 OR FRAC. (X/X) -&gt; ±0.5"    0.00 -&gt; ±0.125" 0.0 -&gt; ±0.25"                    0.000 -&gt; ±0.0625"</p> <p><b>ANGULAR STD TOLERANCES</b> 0 -&gt; ± 2 DEG. 0.0 -&gt; ± 0.5 DEG.                0.00 -&gt; ± 0.1 DEG.</p> <p>Tank welds must respect SI-0039 specifications</p>	<p><b>REVISION DESCRIPTION</b></p> <table border="1" style="width: 100%; border-collapse: collapse;"> <tr> <td style="width: 50%;">DRAWN BY <b>E Bourassa</b></td> <td style="width: 50%;">2007-12-11</td> </tr> <tr> <td>VERIFIED BY <b>B Chartier</b></td> <td>2008-01-10</td> </tr> <tr> <td>APPROVED BY <b>E Bourassa</b></td> <td>2008-01-10</td> </tr> </table>	DRAWN BY <b>E Bourassa</b>	2007-12-11	VERIFIED BY <b>B Chartier</b>	2008-01-10	APPROVED BY <b>E Bourassa</b>	2008-01-10	<div style="text-align: center;"> <h2 style="margin: 0;">Granby Steel Tanks</h2> <p style="font-size: small; margin: 0;">© 2007 GRANBY INDUSTRIES LIMITED PARTNERSHIP</p> </div> <table border="1" style="width: 100%; border-collapse: collapse;"> <tr> <td style="width: 30%;">SIZE <b>A</b></td> <td style="width: 40%;">PART NO <b>SI0075</b></td> <td style="width: 30%;">REV <b>A.</b></td> </tr> <tr> <td colspan="3" style="text-align: center;"> <b>GENERIC DRAWING FOR HORIZONTAL OBROUND ULC-S602 TANKS</b> </td> </tr> <tr> <td>UNITS <b>INCHES</b></td> <td>SCALE <b>0.05 : 1</b></td> <td style="text-align: right;">SHEET 1 OF 1</td> </tr> </table>	SIZE <b>A</b>	PART NO <b>SI0075</b>	REV <b>A.</b>	<b>GENERIC DRAWING FOR HORIZONTAL OBROUND ULC-S602 TANKS</b>			UNITS <b>INCHES</b>	SCALE <b>0.05 : 1</b>	SHEET 1 OF 1
DRAWN BY <b>E Bourassa</b>	2007-12-11																
VERIFIED BY <b>B Chartier</b>	2008-01-10																
APPROVED BY <b>E Bourassa</b>	2008-01-10																
SIZE <b>A</b>	PART NO <b>SI0075</b>	REV <b>A.</b>															
<b>GENERIC DRAWING FOR HORIZONTAL OBROUND ULC-S602 TANKS</b>																	
UNITS <b>INCHES</b>	SCALE <b>0.05 : 1</b>	SHEET 1 OF 1															