



SOLENNE SERIES

CONDENSING

PCH - PCC - PCI

171 000 BTU

HEATER AND WATER HEATER

CONDENSING

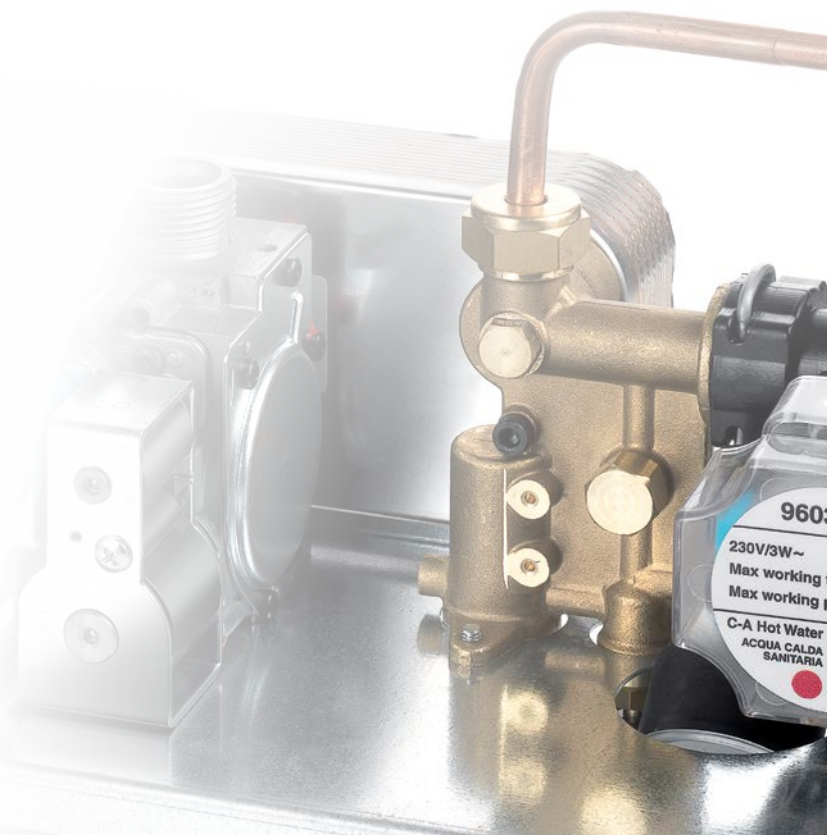


## CONDENSING WALL-HUNG GAS BOILERS

### HARBORING A BLEND OF INNOVATION

With thousands of units sold and still counting, this blend of technology offers the best of condensing at an affordable price.

- » Compact, light and economic
- » Ideal for residential applications
- » Efficient
- » Power rates from 80 to 171 MBH
- » Eco-friendly



# SOLENNE

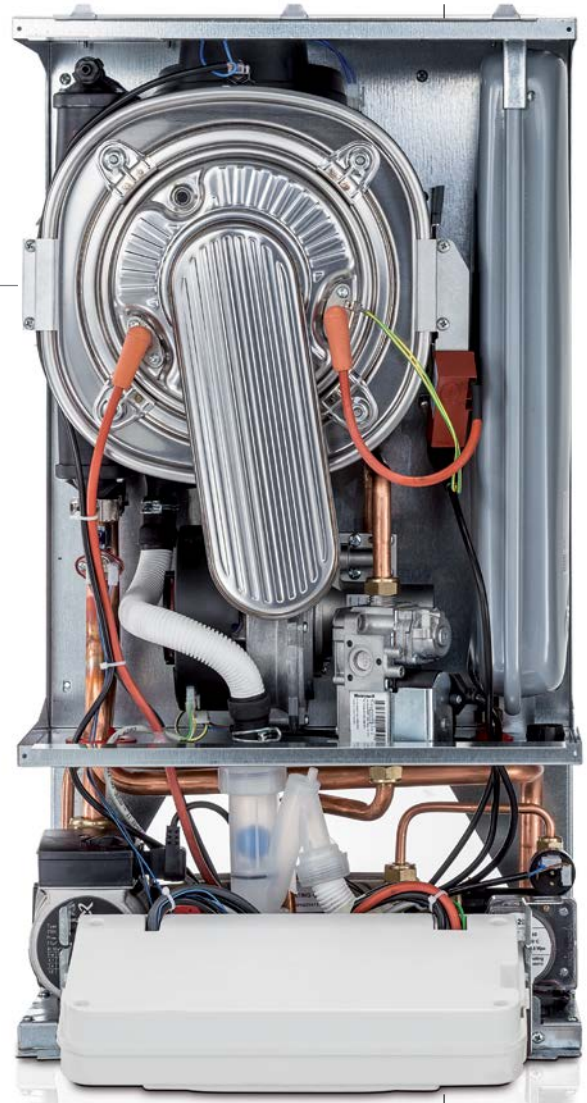
## AMERICA'S BEST HEATING VALUE

The Solenne line of wall mounted gas-fired boilers combine the efficiency requirements necessary in today's economic environment and partners flawlessly with advanced hydronic-heating technology. The Pensotti Solenne Series is offered as a competitive package which effortlessly blends value and performance.

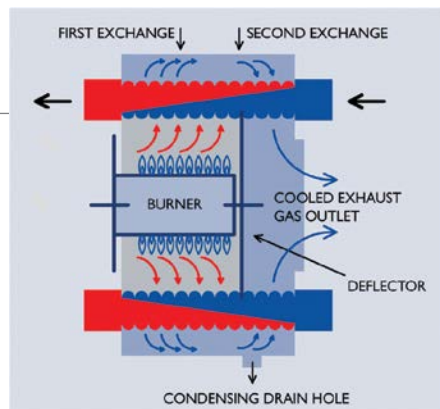
## ENERGY EFFICIENCY

The Pensotti gas condensing boiler maximizes the efficiency of your heating system by utilizing several energy saving operations. The Solenne boiler reduces energy which commonly escapes through the chimney in traditional systems by extracting all heat possible from the combustion process. The Solenne boiler allows for full modulation of the burner flame based upon circulating water temperatures, which helps decrease the amount of fuel while increasing efficiency and longevity of the system components.

Further increases in efficiency can be achieved by utilizing the included outdoor reset control. This control allows the boiler to monitor outside temperatures and adjust the boiler's temperature accordingly. As temperatures outside decrease, the boiler temperature increases. As outdoor conditions become warmer, the boiler temperature will decrease. This feature creates a more comfortable environment inside the home while decreasing fuel consumption.



Pensotti PCC Series  
Combination Heat and  
Instantaneous Hot Water Boiler



Condensing of the flue gases is the process of extracting all possible latent heat out of the gases and converting it into heat energy. This increases efficiency while reducing emissions into the environment.

## VALUE

Pensotti's condensing boiler is a fully packaged, wall mounted heating and hot water solution with an intuitive control system. Built-in features including a Primary Circulator, Expansion Tank, Relief Valve, Self-Diagnostic Control and more, along with a Limited 10-years heat exchanger warranty and a 5-years parts warranty all packaged in an appliance quality cabinet, ensure that the Solenne series boiler is a valuable solution that will provide years of dependability.

## VERSATILITY

The Pensotti Solenne series consists of six different models with three different maximum heating capacities ranging from 80 to 171 MBH. Heating only, Combination Heat and Hot Water, and Combination with Micro Hot Water Storage models make the Solenne series the most versatile line available today.

Pensotti Solenne boilers can be fired with either propane or natural gas using a simple conversion process. Flexible venting options of either Concentric or Twin Pipe Polypropylene venting allow the Solenne series to be customized to fit installation requirements in any home.

## PCH FEATURES

The Solenne PCH series are heating only boilers with the option to connect an indirect water heater. Using the supplied pipe connections, pre-wired sensor and the built-in 3 speed circulator, installation of an indirect water heater requires fewer components, reducing installation costs.

## PCC FEATURES

If instantaneous hot water is what you require, then the Solenne PCC series is the boiler for the job. The boiler produces domestic hot water via the integrated stainless steel and copper brazed plate heat exchanger. Responding instantly upon a demand, the boiler will prioritize all domestic hot water needs. Combining heat and domestic water into one compact appliance dramatically reduces the installation space that is typically required with traditional systems.

## PCI FEATURES

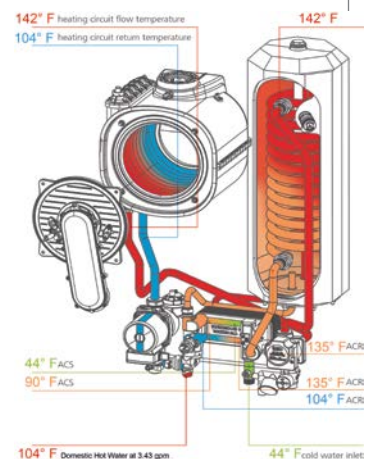
Pensotti's PCI series combines the efficiency of an instantaneous water heater with the benefits of an indirect water heater. The PCI boiler is unique to anything on the market today. With its patented Duopass® system, consisting of a brazed plate heat exchanger and integrated micro storage water heater, the PCI boiler provides abundant domestic hot water. Upon a demand for hot water, the PCI boiler responds by instantly re-heating domestic water held within the storage tank and pre-heating the entering cold water via the brazed plate heat exchanger. It is due to this process that the PCI series boiler has significantly increased recovery rates as compared to any standard combi-boiler.



The Solenne's intuitive control system with digital display provides simple heat and hot water temperature adjustments.



With the Pensotti's fully packaged design, setup is quicker and easier, reducing installation costs.

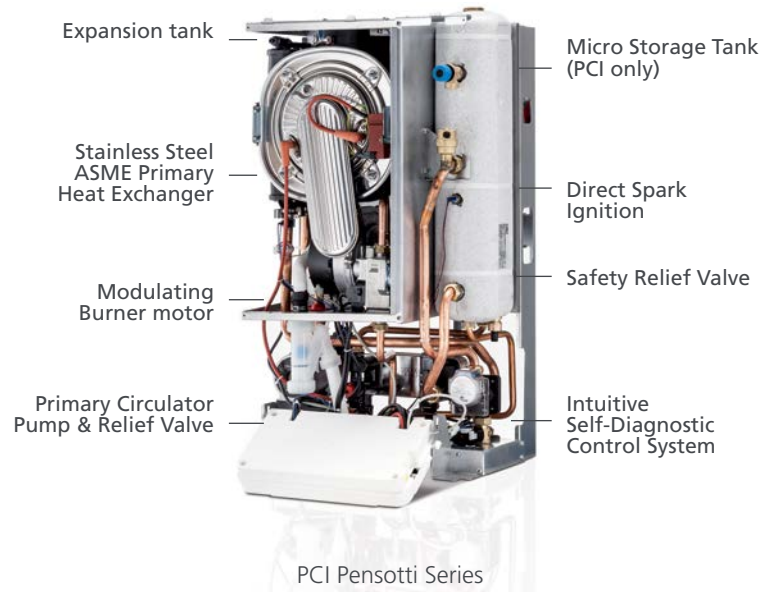


The PCI series Duopass® system can provide abundant hot water with increased recovery over traditional combi-boilers.

# SOLENNE

## BENEFITS

- High efficiency, Low NOx operation
- Fully modulating and condensing with a 5:1 turndown
- Compact zero clearance to combustibles design
- Clean, appliance quality, service friendly, metal cabinet
- Reliable, stainless steel, ASME primary heat exchanger
- Propane or Natural Gas Fired
- Whisper quiet operation
- Simple installation with supplied pipe fittings and isolation valves
- Flexible venting options
- Self diagnostic control with Freeze Protection, Pump Exercise and Outdoor Temperature Reset Capability



## TECHNICAL DATA

	PCH 18B-H	PCH 34B-H	PCH 50B-H	PCC 34-H	PCI 18/8-H	PCI 34/20-H
<b>Performance Data</b>						
Rated Input min-max (MBH)	16-80	34-116	41-171	34-116	16-80	34-116
DOE Heating Capacity (MBH)	73	106	156	106	73	106
Efficiency - A.F.U.E.*	91 %	91 %	91 %	91 %	91 %	91 %
Heat temperature range	85 -185 °F					
<b>Dimensions</b>						
Weight (lbs.)	80	88	114	88	114	146
Height (in.)	28,7	28,7	27,6	28,7	31,1	35,5
Width (in.)	16,1	16,1	19,3	16,1	17,7	19,5
Depth (in.)	11,2	12,2	18,5	12,2	13	18,9
<b>Domestic Hot Water Data</b>						
DHW flow rate 63 °F Rise (gpm)	-	-	-	3,77	3,1	4,5
DHW storage (US Gals.)	-	-	-	-	2,11	5,30
DHW temperature range	95-167 °F					
<b>Venting</b>						
2 pipe polypropylene vent size 2" (60 mm)	2 in or 3 in (50 or 75 mm)					
Concentric vent size	3.15 in/5 in (80/120 mm)					



GRANBY HEATING PRODUCTS LLC  
34, COFFIN AVE. P.O. BOX 3358  
BREWER MAINE (04412)

PENSOTTISALES@GRANBYINDUSTRIES.COM

WWW.GRANBYINDUSTRIES.COM

