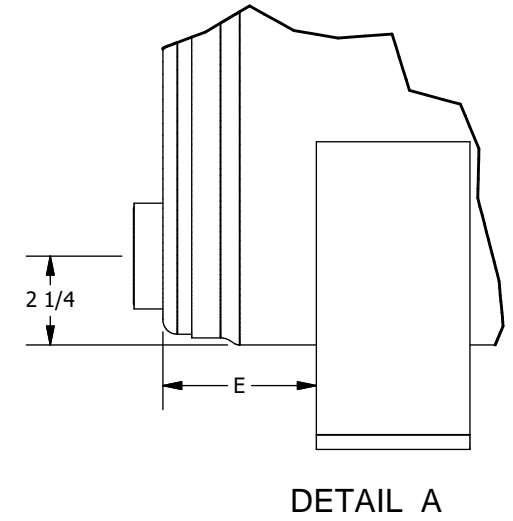
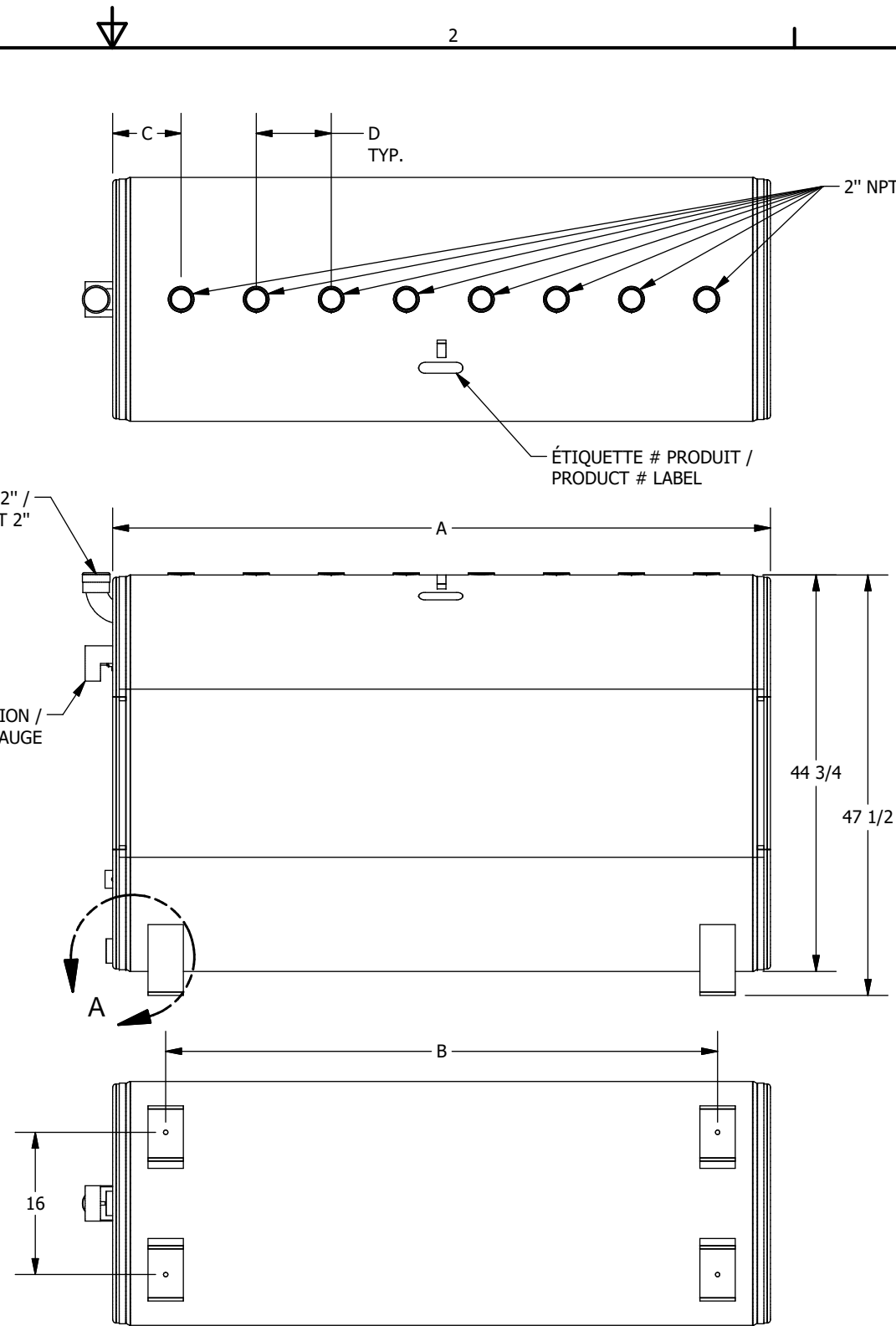
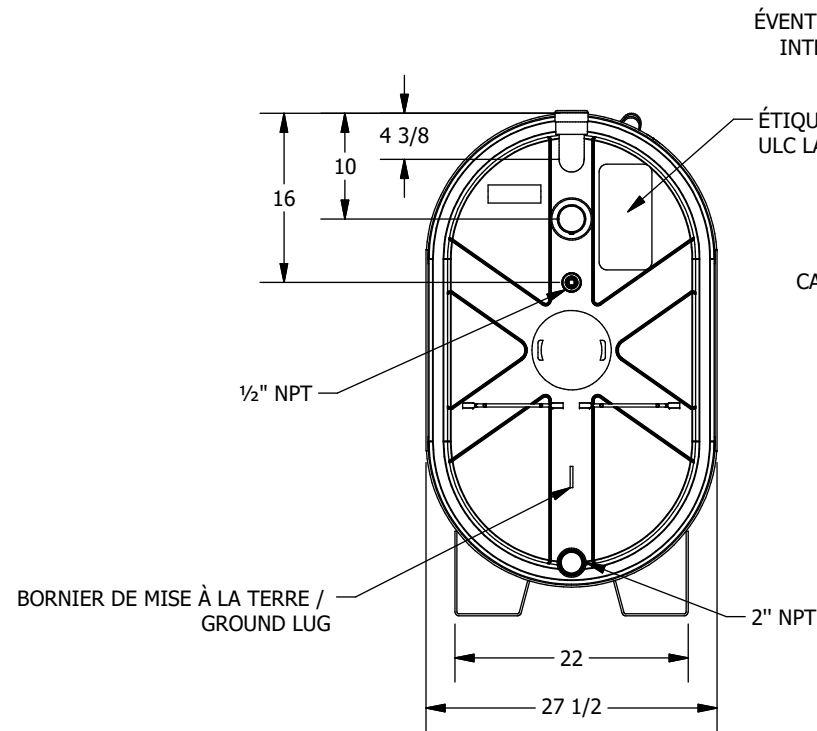


# PRODUIT / PRODUCT #	VOLUME(L,GAL)	POIDS APPROX. / APPROX. WEIGHT	NOMINAL STEEL THK.	A (in)	B (in)	C (in)	D (in)	E (in)	QTÉ OUV. DESSUS / TOP OPNG QTY
127F22	830, 183	496 Lb / 225 Kg	2.3 mm	52	40	5 1/2	6 3/4	4	7
124F22	1000, 220	566 Lb / 257 Kg	2.3 mm	62 1/2	48	7 1/4	6 3/4	5 1/4	8
125F22	1200, 264	644 Lb / 292 Kg	2.3 mm	74 1/2	62 1/2	7 3/4	8 1/2	4	8



Ce dessin est la propriété exclusive de Industries Granby, SEC. Aucune partie de ce dessin ne peut être utilisée ou reproduite sans sa permission écrite. This drawing is the exclusive property of Granby Industries LP. No part of this drawing may be used or reproduced in any manner without its written permission.			
TOLÉRANCES LINÉAIRES, LINEAR STD TOLERANCES 0 OR FRAC. (X/X) -> ±0.5" 0.00 -> ±0.125" 0.0 -> ±0.25" 0.000 -> ±0.0625"	Description de la révision / Revision description		Industries Granby S.E.C., Granby Industries L.P. © 2018 Industries Granby, SEC. Granby Industries LP
TOLÉRANCES ANGULAIRES, ANGULAR STD 0 -> ± 2 DEG. 0.0 -> ± 0.5 DEG.	Dessiné par / Drawn by <b>S. Potvin</b>	13/04/2018	Format / Size No de la pièce / Part no. REV <b>B SI0181 01</b>
Les soudures doivent respecter la spécification SI-0039. Tank welds must respect SI-0039 specifications.	Approuvé par / Approved by :		Description / Title <b>RES. IND. LEGER D/P OBLONG - ULC-S602 - D/W OBLONG LIGHT IND. TANK</b>
Poids Approx. / Approx. Weight VOIR TABLEAU / SEE TABLE	Unités / Units <b>INCHES</b>	Echelle / Scale	Feuille / Sheet <b>1 / 1</b>