

**SPIN-ON FILTER: 10 MICRON, 17 GPH WITH NPT PIPE CONNECTIONS (40 PSI MAX)**

The spin-on filter helps to increase your heating system's efficiency and to protect your furnace's burner. The element requires low maintenance and can be replaced in a matter of seconds.



EX100-999U



EX21-999

REFERENCE	DESCRIPTION
EX11-999U	Adaptor for ex100 spin-on ex100 UL/ULC
EX200-999	Spin-on filter complete 10 µm, 17 gph UL/ULC
EX21-999	Spin-on element 10micron for EX200 UL/ULC



E402-999

**PRIMARY OIL FILTER (52 PSI MAX, 3/8" PIPE CONNECTIONS)**

These filters are built with a solid aluminum top and heavy gauge zinc-coated canister. The canisters are coated with epoxy inside for an extra protection against corrosion.

REFERENCE	DESCRIPTION
E402-999	Fuel oil filter 3/8" stacked felt element 15 gph UL/ULC
E404-999	Fuel oil filter 3/8" with fiber element 15 gph UL/ULC



E403-995



E405-995

**CANISTER KIT UPGRADE**

This kit includes a canister for replacement, center bolt, gasket and fiber washers. Can be installed on the following filter models: E402, E404, F15, F25, 264, 264F and 1A25A or the equivalent.

REFERENCE	DESCRIPTION
E403-995	Stacked felt element canister kit upgrade E402 UL/ULC
E405-995	Stacked felt element canister kit upgrade E404 UL/ULC



E403-999

E405-999



E401-777S

**PRIMARY FILTER REPLACEMENT ELEMENT**

Replacement oil filter element includes gasket and fiber washers.

REFERENCE	DESCRIPTION
E401-777S	Gasket kit for E400, E402 or E404 filters
E403-999	Stacked felt replacement element for E402
E405-999	White fiber-welded replacement element
EF30-24	Westwood replacement cartridge F65, F70 filter 2A700A

## TANK GAUGE WITH 1 1/2" AND/OR 2" ADAPTOR

Gauges can be fully dismantled to facilitate installation and alignment on all residential tanks. The new generation of graduated covers not only allows easier reading, but also withstands all weather conditions. A double gasket ensures optimum sealing and enables gauges to be installed both inside and outside.



REFERENCE	DESCRIPTION
E024N-999U	24" x 1 1/2" Fuel level gauge (in/out) ULC
E028N-999U	28" x 1 1/2" Fuel level gauge (in/out) ULC
E032N-999U	32" x 1 1/2" Fuel level gauge (in/out) ULC
E036N-999U	36" x 1 1/2" Fuel level gauge (in/out) ULC
E044N-999	44" x 1 1/2" Fuel level gauge (in/out) ULC
E124N-999U	24" x 1 1/2" & 2" Fuel level gauge (in/out) ULC
E128N-999U	28" x 1 1/2" & 2" Fuel level gauge (in/out) ULC
E132N-999U	32" x 1 1/2" & 2" Fuel level gauge (in/out) ULC
E136N-999U	36" x 1 1/2" & 2" Fuel level gauge (in/out) ULC
E144N-999U	44" x 1 1/2" & 2" Fuel level gauge (in/out) ULC
E224N-999U	2" NPT x 24" Fuel level gauge (in/out) ULC
E228N-999U	2" NPT x 28" Fuel level gauge (in/out) ULC
E232N-999U	2" NPT x 32" Fuel level gauge (in/out) ULC
E236N-999U	2" NPT x 36" Fuel level gauge (in/out) ULC
E244N-999U	2" NPT x 44" Fuel level gauge (in/out) ULC
E144-777S	Gauge repair kit (vial and gaskets) ULC

## COMBO ALARM AND GAUGES

Available for horizontal and vertical tanks. The fill alarm and tank gauge are combined into one piece.



REFERENCE	DESCRIPTION
E580-924	Combo vent/gauge 2" NPT x 1 1/4" NPT x 24"
E580-928	Combo vent/gauge 2" NPT x 1 1/4" NPT x 28"
E580-932	Combo vent/gauge 2" NPT x 1 1/4" NPT x 32"
E580-944	Combo vent/gauge 2" NPT x 1 1/4" NPT x 44"
E585-924	Combo vent/gauge 2" NPT x 2" NPT x 24"
E585-928	Combo vent/gauge 2" NPT x 2" NPT x 28"
E585-932	Combo vent/gauge 2" NPT x 2" NPT x 32"
E585-944	Combo vent/gauge 2" NPT x 2" NPT x 44"
E144-777S	Gauge repair kit (vial and gaskets)

## 48", 60" AND 72" GAUGES (ONE SIZE FITS ALL WITH INTERCHANGEABLE FACE)

Can be used on vertical tanks or when the regular arm tank gauge does not work.



E456-999U

REFERENCE	DESCRIPTION
E456-999U	Rope gauge for 48", 60" and 72"



### TANK WHISTLE ALARM

Strong cast iron adaptor. Whistle parts are made of metal.

REFERENCE	DESCRIPTION
E500-999UA	Tank filling signal 1¼" & 2" x 1¼" black ULC
E525-999	Tank filling signal 2"x 2" black ULC
E550-999	Tank filling signal 2"x 2" hi-flow ULC



### TANK OUTLET VALVE

The tank outlet valves are made of brass, a thick material used for greater strength. The valves are certified for fuel oil use.

REFERENCE	DESCRIPTION
E900-999	Straight oil valve ½" x ¾" NPT male, CSA
E990-999	Oil valve 90° ½" X ¾" UL/ULC



### FILL AND VENT CAPS

**Granby Industries** offers a broad array of fill and vent caps for residential oil tanks. Caps are made of ZAMAK, a durable and rust-resistant alloy of zinc and aluminum.

REFERENCE	DESCRIPTION
E102-999	1¼" Rust proof vent cap
E102-999SC	1¼" Rust proof vent cap with screen
E103-999	2" Vent cap
E103-999SC	2" Vent cap with screen
E201-999	2" Threaded fill cap with set screw
E202-999	2" Threaded fill cap (rust proof)
E600-999	2" Threaded fill cap with lock



### CAPS MADE OF ZINC PLATED STEEL

REFERENCE	DESCRIPTION
E105-999	1¼" vent cap with screen
E110-999	2" vent cap with screen

## CAPS MADE OF CAST IRON, WITH ZINC COATING



E106-999

REFERENCE	DESCRIPTION
E106-999	Mushroom vent cap with screen 1¼" NPT
E107-999	Mushroom vent cap with screen 2" NPT
E108-999	Mushroom vent cap with screen 1½" NPT

## NPT TREADED QUICK-FILL ADAPTOR

Made of ZAMAK, a rustproof alloy of zinc and aluminum



E220-999

REFERENCE	DESCRIPTION
E220-999	Quick-fill connector, universal cap

## 45° QUICK-FILL CONNECTORS



E227-999

REFERENCE	DESCRIPTION
E227-999	Quick-fill connector, 45°, 1¼" female
E228-999	Quick-fill connector, 45°, 1½" female
E229-999	Quick-fill connector, 45°, 2" female

## STRAIGHT QUICK-FILL ADAPTERS



E221-999



E224-999

REFERENCE	DESCRIPTION
E221-999	Quick fill connector, straight 1¼" female
E222-999	Quick fill connector, straight 1½" female
E223-999	Quick fill connector, straight 2" female
E224-999	Quick fill connector, straight 1¼" male
E225-999	Quick fill connector, straight 1½" male
E226-999	Quick fill connector, straight 2" male

## DUPLEX BUSHING

Made of cast iron, coated with zinc.



E205-999

REFERENCE	DESCRIPTION
E205-999	Duplex bushing 2" x ¾" NPT
E205F-999	Duplex bushing 2" x ¾" NPT with fittings
E206-999	Duplex bushing 2" x ½" NPT
E206F-999	Duplex bushing 2" x ½" NPT with fittings

## OUTLET VALVE PROTECTOR

Protects the outlet valve against accidental damages. Requires simple installation.



VP1



E055-999

REFERENCE	DESCRIPTION
VP1	Fiberglass outlet protector
VP2	Polyethylene black outlet protector
E055-999	Stainless Steel outlet protector

## 4", 5", 6", 7" and 8" DRAFT REGULATORS

Draft regulators are used on an oil stove or furnace to adjust chimney draft for better combustion. They are made of galvanized sheet metal and are available with or without the collar.



EDR5-999C



E678-999

Référence	DESCRIPTION
EDR5-999	4", 5" and 6" draft regulator ETL
EDR5-999C	4", 5" and 6" draft regulator with collar ETL
E678-999	6", 7" and 8" draft regulator with collar ETL

## TANK LEGS

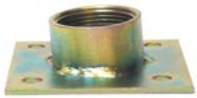
Different sizes are available upon request. (A minimum order quantity is required.)



E010-999G



E010-999N



TA02006

REFERENCE	DESCRIPTION
E009-999N	9" Tank leg (black steel)
E010-999G	10" Tank leg (galvanized steel)
E010-999N	10" Tank leg (black steel)
E011-999G	11" Tank leg (galvanized steel)
E011-999N	11" Tank leg (black steel)
E012-999G	12" Tank leg (galvanized steel)
E012-999N	12" Tank leg (black steel)
TA02006	Tank anchor with 4° angle, zinc plated

## OUTDOOR PROTECTION KIT FOR STEEL TANKS



E075-999

REFERENCE	DESCRIPTION
E075-999	Steel tank outdoor protection kit (E050-999ST and E055-999)
E076-999	Installation kit for 2 in 1 tanks (E107-999, E201-999, E404-999)

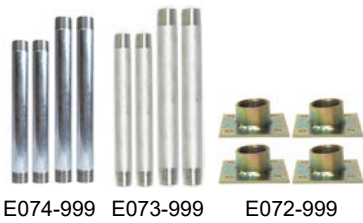
## GAUGE PROTECTOR

Protects the gauge vial against accidental damages. Requires simple installation.



E050-999ST

REFERENCE	DESCRIPTION
E050-999ST	Gauge protector 1 1/2" (stainless steel)
GP1	Fiberglass gauge protector
GP2	Black polyethylene gauge protector



## LEG KIT FOR STEEL TANKS

REFERENCE	DESCRIPTION
E072-999	Steel tank leg flange kit (4 x TA02006)
E073-999	Steel tank galvanized leg kit (2 x 12" and 2 x 11")
E074-999	Steel tank black leg kit (2 x 11" et 2 x 12")

## TANK INSTALLATION KIT



EKIT02-999



EKIT33-999



EXACTA-KIT

REFERENCE	E044N-999	E102-999SC	E201-999	E404-999	E500-999UA	E990-999	E011-999N	E012-999N	E202-999	E402-999	TA02006	E900-999
EKIT02-999	1	1	1	1	1	1						
EKIT33-999	1	1			1	1	2	2	1	1	4	
EXACTA-KIT	1	1	1	1	1							1



For more information,  
please contact the head office  
1020, André-Liné Street  
Granby (Quebec) J2J 1J9 Canada  
@ [sales@granbyindustries.com](mailto:sales@granbyindustries.com)  
W [granbyindustries.com](http://granbyindustries.com)